

THE GLENHAVEN IN JAMES PLANTATION!



Location: JAMES PLANTATION
GREAT FLOORPLAN IN JAMES PLANTATION! Master Bedroom suite on main level! Full brick, 3 car garage, Hardwoods in Dining Room, Family Room, Kitchen, Breakfast area & Powder Room. Kitchen w/tile backsplash, granite counter tops, island & pantry. Iron balusters and oak treads on stairs, Prairie grid windows, Dining Room w/chair rail & picture frame, deck & much more! Buyers will be responsible for the purchase of the appliances and closet shelving.

Get this home for a STEAL!!! Originally priced at \$524,900!! Almost \$150,000 in price reductions over the last year! You can't build this house for this price.

Information

CONTACT INFORMATION



Bob Hecht
info@hechtdevelopment.com
704-809-2500

PRICING

Price: \$375,000.00
Flexibility: Short Sale --
Subject to Lender Approval
Additional Pricing
Information: Very motivated seller. Make offer!!! Short Sale!

Property Location

3122 JAMES PLANTATION
DENVER, NC 28037

Links

- www.hechtdevelopment.com/newhomes.html
- www.hechtdevelopment.com

Features

Bedrooms: 4
Year Built: 2008
Lot Size: 1.07
School District: NORTH LINCOLN
Agent Name: LESLIE AUTON
MLS #: 857146

Bathrooms: 3.5
Subdivision: JAMES PLANTATION
Garage Size: 3 CAR
Square Footage: 3200
Broker: Hecht Development

Attributes

APPLIANCES

- Sink Disposal

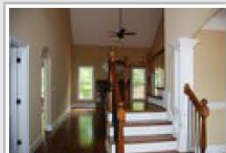
INTERIOR AMENITIES

- Fireplace
- Vaulted Ceilings
- Hardwood Floors
- Attic
- Kitchen Island

EXTERIOR AMENITIES

- Grass Lawn
- Gated Community
- 3/4 mile from 4 lane Hwy 16

Photo Gallery



THE GLENHAVEN IN JAMES PLANTATION!

Home » Photo Gallery

Photo Gallery



Foyer

Dining Room



Kitchen

Kitchen

Kitchen



Breakfast Area

Breakfast Area

Keeping Room



Great Room

Master Bath

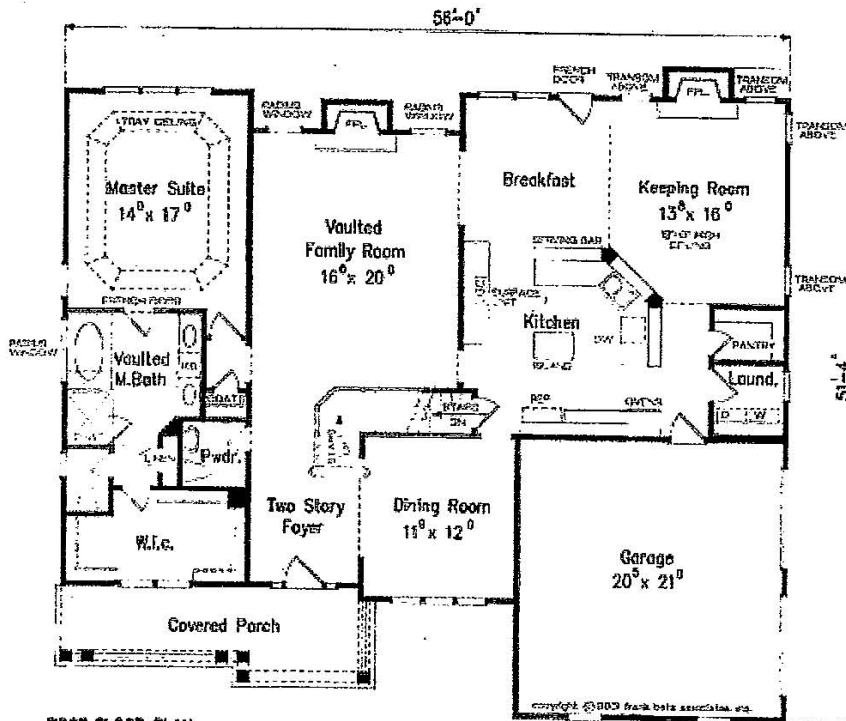
Master Bath



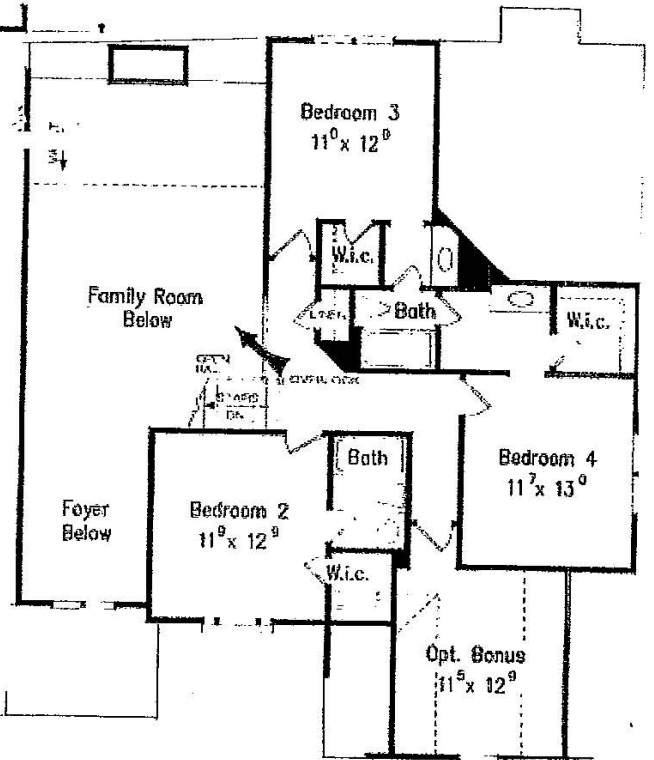
Bonus Room

View of backyard from deck

GLENHAVEN



FIRST FLOOR PLAN



SECOND FLOOR PLAN

PRELIMINARY MAP FOR JAMES PLANTATION

CATAWA SPRINGS TRSP LINCOLN COUNTY, NC
 OCTOBER 6, 2006 SCALE: 1" = 100'
 BONNIE BEAMAN, SURVEYOR #1122-A
 CHUCK POONRY, PLS #2782
 PHILIP HARRIS, PLS #4154
 P.O. BOX 441, DENVER, CO. 80227
 DENVER, CO. 80227
 DATE OF SURVEY & PLAT 10-6-06

TONY L. CLONINGER,
 1047/440

DENVER MASONIC LODGE
 601/684

FUTURE PHASE



OW, J.R.
 F-CIT PROPERTIES, LLC &
 TONY L. CLONINGER JR, INC.
 885 NORTH HIGHWAY 16
 DENVER, NORTH CAROLINA 28037
 (704) 483-3851

NO.	ACRES	OWNER
1	0.764	TONY L. CLONINGER JR, INC.
2	0.830	TONY L. CLONINGER JR, INC.
3	0.872	TONY L. CLONINGER JR, INC.
4	1.139	TONY L. CLONINGER JR, INC.
5	0.978	TONY L. CLONINGER JR, INC.
6	0.935	TONY L. CLONINGER JR, INC.
7	1.078	TONY L. CLONINGER JR, INC.
8	1.389	TONY L. CLONINGER JR, INC.
9	1.191	TONY L. CLONINGER JR, INC.
10	2.136	TONY L. CLONINGER JR, INC.
11	2.761	TONY L. CLONINGER JR, INC.
12	1.767	TONY L. CLONINGER JR, INC.
13	2.334	TONY L. CLONINGER JR, INC.
14	1.428	TONY L. CLONINGER JR, INC.
15	4.689	TONY L. CLONINGER JR, INC.
16	3.209	TONY L. CLONINGER JR, INC.
17	2.029	TONY L. CLONINGER JR, INC.
18	3.103	TONY L. CLONINGER JR, INC.
19	1.656	TONY L. CLONINGER JR, INC.
20	1.313	TONY L. CLONINGER JR, INC.
21	1.387	TONY L. CLONINGER JR, INC.
22	1.033	TONY L. CLONINGER JR, INC.
23	1.078	TONY L. CLONINGER JR, INC.
24	1.389	TONY L. CLONINGER JR, INC.
25	2.136	TONY L. CLONINGER JR, INC.
26	2.761	TONY L. CLONINGER JR, INC.
27	1.767	TONY L. CLONINGER JR, INC.
28	2.334	TONY L. CLONINGER JR, INC.
29	1.428	TONY L. CLONINGER JR, INC.
30	4.689	TONY L. CLONINGER JR, INC.
31	3.209	TONY L. CLONINGER JR, INC.
32	2.029	TONY L. CLONINGER JR, INC.
33	3.103	TONY L. CLONINGER JR, INC.
34	1.656	TONY L. CLONINGER JR, INC.
35	1.313	TONY L. CLONINGER JR, INC.
36	1.387	TONY L. CLONINGER JR, INC.
37	1.033	TONY L. CLONINGER JR, INC.
38	1.078	TONY L. CLONINGER JR, INC.
39	1.389	TONY L. CLONINGER JR, INC.
40	1.191	TONY L. CLONINGER JR, INC.
41	2.136	TONY L. CLONINGER JR, INC.
42	2.761	TONY L. CLONINGER JR, INC.
43	1.767	TONY L. CLONINGER JR, INC.
44	2.334	TONY L. CLONINGER JR, INC.
45	1.428	TONY L. CLONINGER JR, INC.
46	4.689	TONY L. CLONINGER JR, INC.
47	3.209	TONY L. CLONINGER JR, INC.
48	2.029	TONY L. CLONINGER JR, INC.
49	3.103	TONY L. CLONINGER JR, INC.
50	1.656	TONY L. CLONINGER JR, INC.
51	1.313	TONY L. CLONINGER JR, INC.
52	1.387	TONY L. CLONINGER JR, INC.
53	1.033	TONY L. CLONINGER JR, INC.
54	1.078	TONY L. CLONINGER JR, INC.
55	1.389	TONY L. CLONINGER JR, INC.
56	1.191	TONY L. CLONINGER JR, INC.
57	2.136	TONY L. CLONINGER JR, INC.
58	2.761	TONY L. CLONINGER JR, INC.
59	1.767	TONY L. CLONINGER JR, INC.
60	2.334	TONY L. CLONINGER JR, INC.
61	1.428	TONY L. CLONINGER JR, INC.
62	4.689	TONY L. CLONINGER JR, INC.
63	3.209	TONY L. CLONINGER JR, INC.
64	2.029	TONY L. CLONINGER JR, INC.
65	3.103	TONY L. CLONINGER JR, INC.
66	1.656	TONY L. CLONINGER JR, INC.
67	1.313	TONY L. CLONINGER JR, INC.
68	1.387	TONY L. CLONINGER JR, INC.
69	1.033	TONY L. CLONINGER JR, INC.
70	1.078	TONY L. CLONINGER JR, INC.
71	1.389	TONY L. CLONINGER JR, INC.
72	1.191	TONY L. CLONINGER JR, INC.
73	2.136	TONY L. CLONINGER JR, INC.
74	2.761	TONY L. CLONINGER JR, INC.
75	1.767	TONY L. CLONINGER JR, INC.
76	2.334	TONY L. CLONINGER JR, INC.
77	1.428	TONY L. CLONINGER JR, INC.
78	4.689	TONY L. CLONINGER JR, INC.
79	3.209	TONY L. CLONINGER JR, INC.
80	2.029	TONY L. CLONINGER JR, INC.
81	3.103	TONY L. CLONINGER JR, INC.
82	1.656	TONY L. CLONINGER JR, INC.
83	1.313	TONY L. CLONINGER JR, INC.
84	1.387	TONY L. CLONINGER JR, INC.
85	1.033	TONY L. CLONINGER JR, INC.
86	1.078	TONY L. CLONINGER JR, INC.
87	1.389	TONY L. CLONINGER JR, INC.
88	1.191	TONY L. CLONINGER JR, INC.
89	2.136	TONY L. CLONINGER JR, INC.
90	2.761	TONY L. CLONINGER JR, INC.
91	1.767	TONY L. CLONINGER JR, INC.
92	2.334	TONY L. CLONINGER JR, INC.
93	1.428	TONY L. CLONINGER JR, INC.
94	4.689	TONY L. CLONINGER JR, INC.
95	3.209	TONY L. CLONINGER JR, INC.
96	2.029	TONY L. CLONINGER JR, INC.
97	3.103	TONY L. CLONINGER JR, INC.
98	1.656	TONY L. CLONINGER JR, INC.
99	1.313	TONY L. CLONINGER JR, INC.
100	1.387	TONY L. CLONINGER JR, INC.

NO.	ACRES	OWNER
101	0.764	TONY L. CLONINGER JR, INC.
102	0.830	TONY L. CLONINGER JR, INC.
103	0.872	TONY L. CLONINGER JR, INC.
104	1.139	TONY L. CLONINGER JR, INC.
105	0.978	TONY L. CLONINGER JR, INC.
106	0.935	TONY L. CLONINGER JR, INC.
107	1.078	TONY L. CLONINGER JR, INC.
108	1.389	TONY L. CLONINGER JR, INC.
109	1.191	TONY L. CLONINGER JR, INC.
110	2.136	TONY L. CLONINGER JR, INC.
111	2.761	TONY L. CLONINGER JR, INC.
112	1.767	TONY L. CLONINGER JR, INC.
113	2.334	TONY L. CLONINGER JR, INC.
114	1.428	TONY L. CLONINGER JR, INC.
115	4.689	TONY L. CLONINGER JR, INC.
116	3.209	TONY L. CLONINGER JR, INC.
117	2.029	TONY L. CLONINGER JR, INC.
118	3.103	TONY L. CLONINGER JR, INC.
119	1.656	TONY L. CLONINGER JR, INC.
120	1.313	TONY L. CLONINGER JR, INC.
121	1.387	TONY L. CLONINGER JR, INC.
122	1.033	TONY L. CLONINGER JR, INC.
123	1.078	TONY L. CLONINGER JR, INC.
124	1.389	TONY L. CLONINGER JR, INC.
125	1.191	TONY L. CLONINGER JR, INC.
126	2.136	TONY L. CLONINGER JR, INC.
127	2.761	TONY L. CLONINGER JR, INC.
128	1.767	TONY L. CLONINGER JR, INC.
129	2.334	TONY L. CLONINGER JR, INC.
130	1.428	TONY L. CLONINGER JR, INC.
131	4.689	TONY L. CLONINGER JR, INC.
132	3.209	TONY L. CLONINGER JR, INC.
133	2.029	TONY L. CLONINGER JR, INC.
134	3.103	TONY L. CLONINGER JR, INC.
135	1.656	TONY L. CLONINGER JR, INC.
136	1.313	TONY L. CLONINGER JR, INC.
137	1.387	TONY L. CLONINGER JR, INC.
138	1.033	TONY L. CLONINGER JR, INC.
139	1.078	TONY L. CLONINGER JR, INC.
140	1.389	TONY L. CLONINGER JR, INC.
141	1.191	TONY L. CLONINGER JR, INC.
142	2.136	TONY L. CLONINGER JR, INC.
143	2.761	TONY L. CLONINGER JR, INC.
144	1.767	TONY L. CLONINGER JR, INC.
145	2.334	TONY L. CLONINGER JR, INC.
146	1.428	TONY L. CLONINGER JR, INC.
147	4.689	TONY L. CLONINGER JR, INC.
148	3.209	TONY L. CLONINGER JR, INC.
149	2.029	TONY L. CLONINGER JR, INC.
150	3.103	TONY L. CLONINGER JR, INC.
151	1.656	TONY L. CLONINGER JR, INC.
152	1.313	TONY L. CLONINGER JR, INC.
153	1.387	TONY L. CLONINGER JR, INC.
154	1.033	TONY L. CLONINGER JR, INC.
155	1.078	TONY L. CLONINGER JR, INC.
156	1.389	TONY L. CLONINGER JR, INC.
157	1.191	TONY L. CLONINGER JR, INC.
158	2.136	TONY L. CLONINGER JR, INC.
159	2.761	TONY L. CLONINGER JR, INC.
160	1.767	TONY L. CLONINGER JR, INC.
161	2.334	TONY L. CLONINGER JR, INC.
162	1.428	TONY L. CLONINGER JR, INC.
163	4.689	TONY L. CLONINGER JR, INC.
164	3.209	TONY L. CLONINGER JR, INC.
165	2.029	TONY L. CLONINGER JR, INC.
166	3.103	TONY L. CLONINGER JR, INC.
167	1.656	TONY L. CLONINGER JR, INC.
168	1.313	TONY L. CLONINGER JR, INC.
169	1.387	TONY L. CLONINGER JR, INC.
170	1.033	TONY L. CLONINGER JR, INC.
171	1.078	TONY L. CLONINGER JR, INC.
172	1.389	TONY L. CLONINGER JR, INC.
173	1.191	TONY L. CLONINGER JR, INC.
174	2.136	TONY L. CLONINGER JR, INC.
175	2.761	TONY L. CLONINGER JR, INC.
176	1.767	TONY L. CLONINGER JR, INC.
177	2.334	TONY L. CLONINGER JR, INC.
178	1.428	TONY L. CLONINGER JR, INC.
179	4.689	TONY L. CLONINGER JR, INC.
180	3.209	TONY L. CLONINGER JR, INC.
181	2.029	TONY L. CLONINGER JR, INC.
182	3.103	TONY L. CLONINGER JR, INC.
183	1.656	TONY L. CLONINGER JR, INC.
184	1.313	TONY L. CLONINGER JR, INC.
185	1.387	TONY L. CLONINGER JR, INC.
186	1.033	TONY L. CLONINGER JR, INC.
187	1.078	TONY L. CLONINGER JR, INC.
188	1.389	TONY L. CLONINGER JR, INC.
189	1.191	TONY L. CLONINGER JR, INC.
190	2.136	TONY L. CLONINGER JR, INC.
191	2.761	TONY L. CLONINGER JR, INC.
192	1.767	TONY L. CLONINGER JR, INC.
193	2.334	TONY L. CLONINGER JR, INC.
194	1.428	TONY L. CLONINGER JR, INC.
195	4.689	TONY L. CLONINGER JR, INC.
196	3.209	TONY L. CLONINGER JR, INC.
197	2.029	TONY L. CLONINGER JR, INC.
198	3.103	TONY L. CLONINGER JR, INC.
199	1.656	TONY L. CLONINGER JR, INC.
200	1.313	TONY L. CLONINGER JR, INC.

● SOLD

PRELIMINARY
 SUBJECT TO CHANGE

