



2012

Inventory Reduction!

Bay Crossing

Two lots Remaining

Lot 53	MLS # 849049	.83 ac	\$49,500
Lot 55	MLS # 849049	.89 ac	\$49,500
2-16-12			

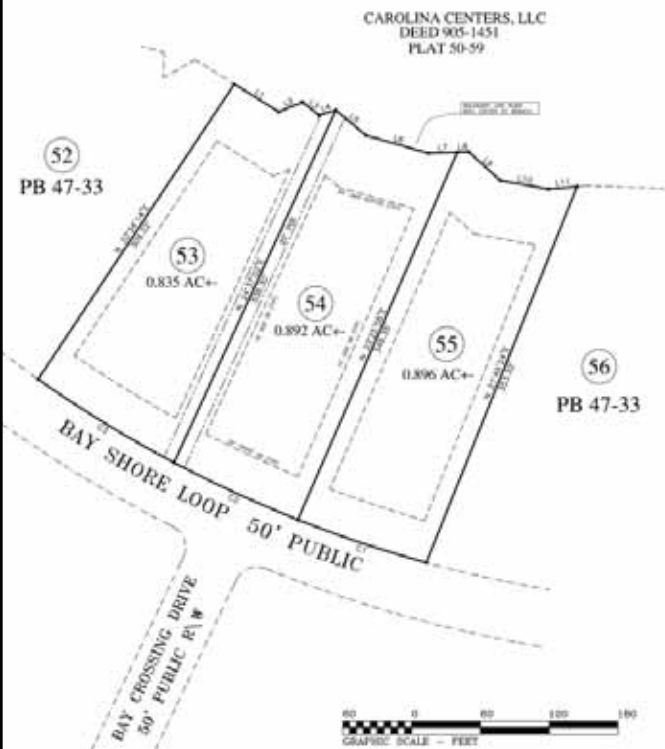
more details...

HECHT
Development 
hechtdevelopment.com



704-809-2500 or 704-489-1183
info@hechtdevelopment.com
A HECHT Development Neighborhood

Bay Crossing



General Info

- Large Wooded Lots
- Streetlights and Curb & Gutter Roadways
- Natural Gas Available
- **Directions:** I-77 North to Exit 36. Turn left onto Hwy. 150, travel approximately 3 miles to Perth Rd. and turn right. Left on Liva Ln. then right into Bay Crossing. Go to the end and the lots are at the intersection of Bay Crossing Dr. and Bay Shore Loop.

- **Restrictive Covenants:** Minimum Square Feet to Build: 2,800 square feet.
- **Owner Association Dues 2012:**
\$519.09 Annual to maintain entrance and common areas.
- **Financing:** Special financing offered thru Peoples Bank. Please contact Mark or Rhonda with Peoples Bank at 704-489-8940. Rfleming@peoplesbanknc.com
- For Architectural Review, water and sewer questions, please call Bob Hecht at 704-634-4444
- For lot plats, Covenants Conditions and Restrictions and Architectural Landscape Guidelines please visit hechtdevelopment.com



Please Call 704-809-2500 for more information.

HECHT
Development

www.hechtdevelopment.com
A HECHT Development Neighborhood



NEW PRICING

New Homes



Scan with your
Smartphone



3326 CAYTON DRIVE, WYNSWEPT

Just completed and ready for you! Two story living room, formal dining, four bedrooms and large bonus room, granite in kitchen. Main level owner suite. \$264,900. Carolina MLS 981498 or Catawba MLS 9556145



3348 CAYTON DRIVE, WYNSWEPT

Craftsman style ranch with large bonus room. Front and rear porch and just 2 miles from the four-lane Hwy. 16 bypass into Charlotte. \$249,900. Carolina MLS 970213 or Catawba MLS 9555951



3331 CAYTON DRIVE, WYNSWEPT

Brick transitional with lots of upgrades. Energy Star Qualified. 3 bedroom plus bonus, built-in cabinetry, surround sound, and just 2 miles from the four-lane Hwy. 16 bypass into Charlotte. \$295,000. Carolina MLS 935669 or Catawba MLS 9552678



4142 MINERAL LANE, MINERS CREEK

Four bedrooms plus large bonus room in this 1 1/2 story home on wood deck. North Lincoln schools. Selling below closing costs. \$286,000. Carolina MLS 9560299

SOLD

Hecht Communities



Autumn Woods 3

- Iron Station in East Lincoln County
- Lot Size - 1 acre to 4.5 acres
- 50 lots on 118 acres
- Boat / Camper Storage
- Priced from \$29,900 to \$64,800



Fairfield Forest 4

- Denver in East Lincoln County
- Convenient to Golf, Swim & Tennis
- 50 Lot Community, Less than Half Remaining
- Sidewalks & Streetlights, Cty Water & Sewer
- Priced From \$24,500 to \$29,500



James Plantation 5

- Denver in East Lincoln County
- 3/4 Mile from Highway 16 Bypass
- 21 Lots , 1 to 4.5 Acres, Gated Entry
- Streetlights, County Water & Sewer
- Priced from \$19,500 to \$44,500



Kerns Meadow 2

- Huntersville in North Mecklenburg
- Lot Size - about 3/4 of an Acre
- Gated Entry 12 Lot Community
- ONLY 1 LOT REMAINING
- Priced at \$28,500



Killian Crossing 1

- Denver in East Lincoln County
- Lot Size - 1/2 Acre Plus
- Established Community, County Water
- Over 49 acres Common Open Space
- Priced from \$20,950 - \$26,250



WynSwept 6

- Maiden in S.E. Catawba County
- Lot Size - 3/4 acre to Over 2 Acres
- Two Miles from Highway 16 Bypass
- Priced from \$22,500
- New Homes Available

