

ELE)

RANDY ROSS
PB 13-367
1769/544

SAMMIE ROSS
PB 13-367
1310/535

HINE ROSS
9-203
10/522



COS
3.37 AC.



2

1.61 AC+-

1

1.38 AC+-

1.35 AC+-

27

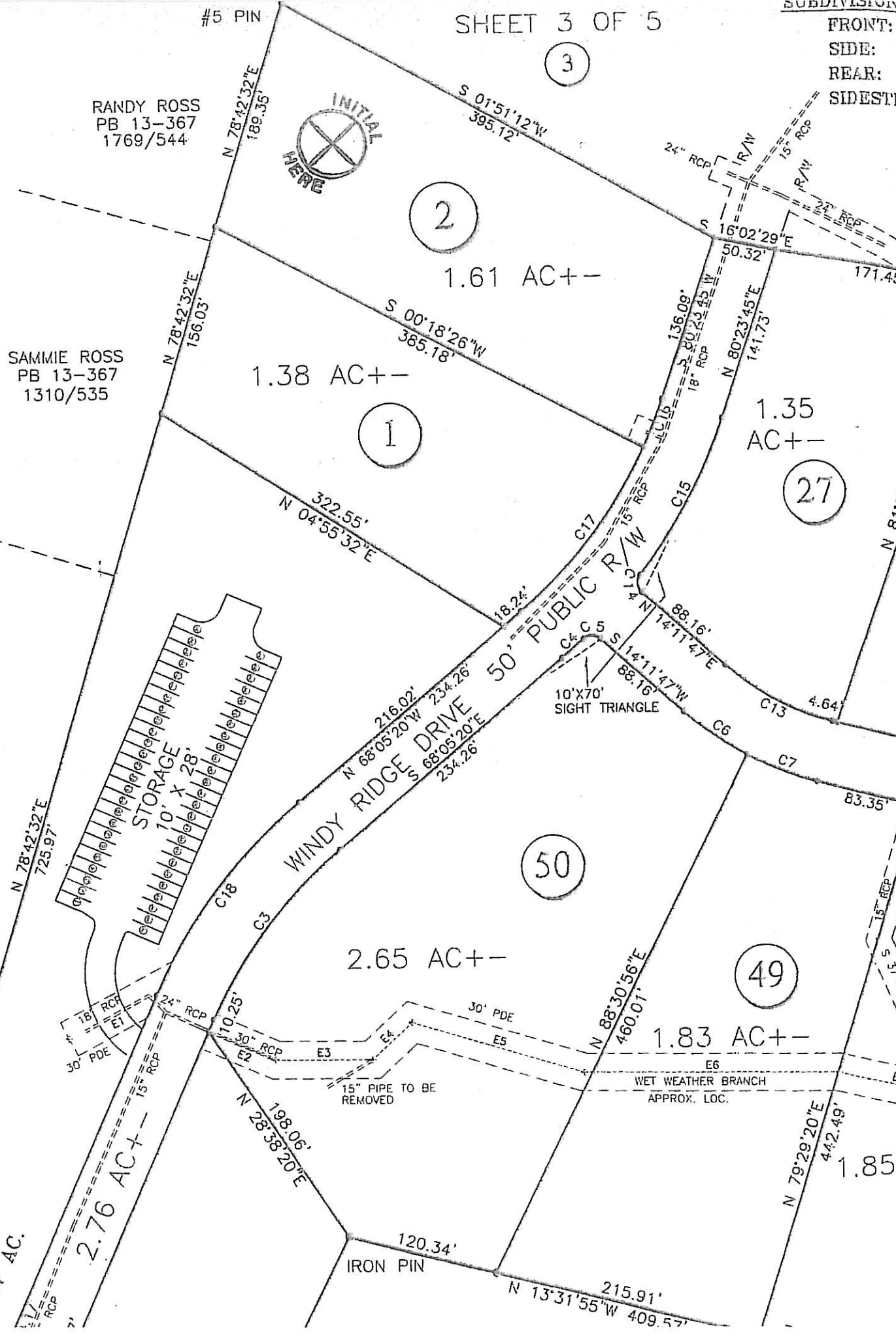
50

2.65 AC+-

49

1.83 AC+-

1.85



IRON PIN

3

N 78°42'32"E
156.03'

N 78°42'32"E
189.35'

S 01°51'12"W
395.12'

S 16°02'29"E
50.32'

S 00°18'26"W
365.18'

S 80°23'45"E
141.73'

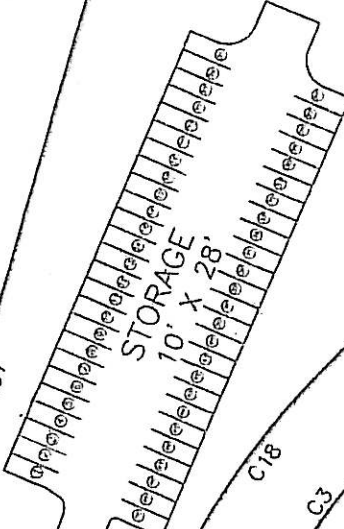
N 04°55'32"E
322.55'

N 80°23'45"E
141.73'

N 68°05'20"W
234.26'

S 14°11'47"W
88.16'

N 78°42'32"E
725.97'



N 68°05'20"E
234.26'

S 14°11'47"W
88.16'

N 88°30'56"E
460.07'

N 28°38'20"E
198.06'

N 79°29'20"E
442.49'

N 13°31'55"W
409.57'

120.34'

WET WEATHER BRANCH
APPROX. LOC.

15" PIPE TO BE REMOVED

10'X70'
SIGHT TRIANGLE

