



2012

Inventory Reduction Event

Fairfield Forest

more details...

HECHT
Development 
hechtdevelopment.com



704-809-2500 or 704-489-1183
info@hechtdevelopment.com
A HECHT Development Neighborhood



Fairfield Forest

Community Info

- Conveniently located beside Westport Golf Course
- All Brick Community
- County Water & Sewer
- Bring your own Builder
- Paved Roads with Curb and Gutter
- Sidewalks and Streetlights

General Info

- 2,000 sq.ft. minimum to build
- Directions:
From the intersection of Hwy. 16 and Hwy. 73, drive north on Hwy. 16 approximately 5 miles, then right onto Fairfield Forest Road. Fairfield Forest Subdivision will be on your left.

- Owner Association Dues 2012:
\$612 Annual to maintain the common areas
- Schools:
St. James Elementary
North Lincoln Middle
North Lincoln High
- Financing:
Special financing offered thru Peoples Bank. Please contact Mark or Rhonda with Peoples Bank at 704-489-8940. Rfleming@peoples-banknc.com
- County Water & Sewer Fees PAID by developer on six lots. \$6,000 in immediate savings.
- For Architectural Review, water and sewer questions, please call Bob Hecht at 704-634-4444
- For lot plats, Covenants Conditions and Restrictions and Architectural Landscape Guidelines please visit hechtdevelopment.com

Please Call 704-489-1183 for questions.

HECHT
Development

www.hechtdevelopment.com
A HECHT Development Neighborhood



Fairfield Forest

Available Home Sites

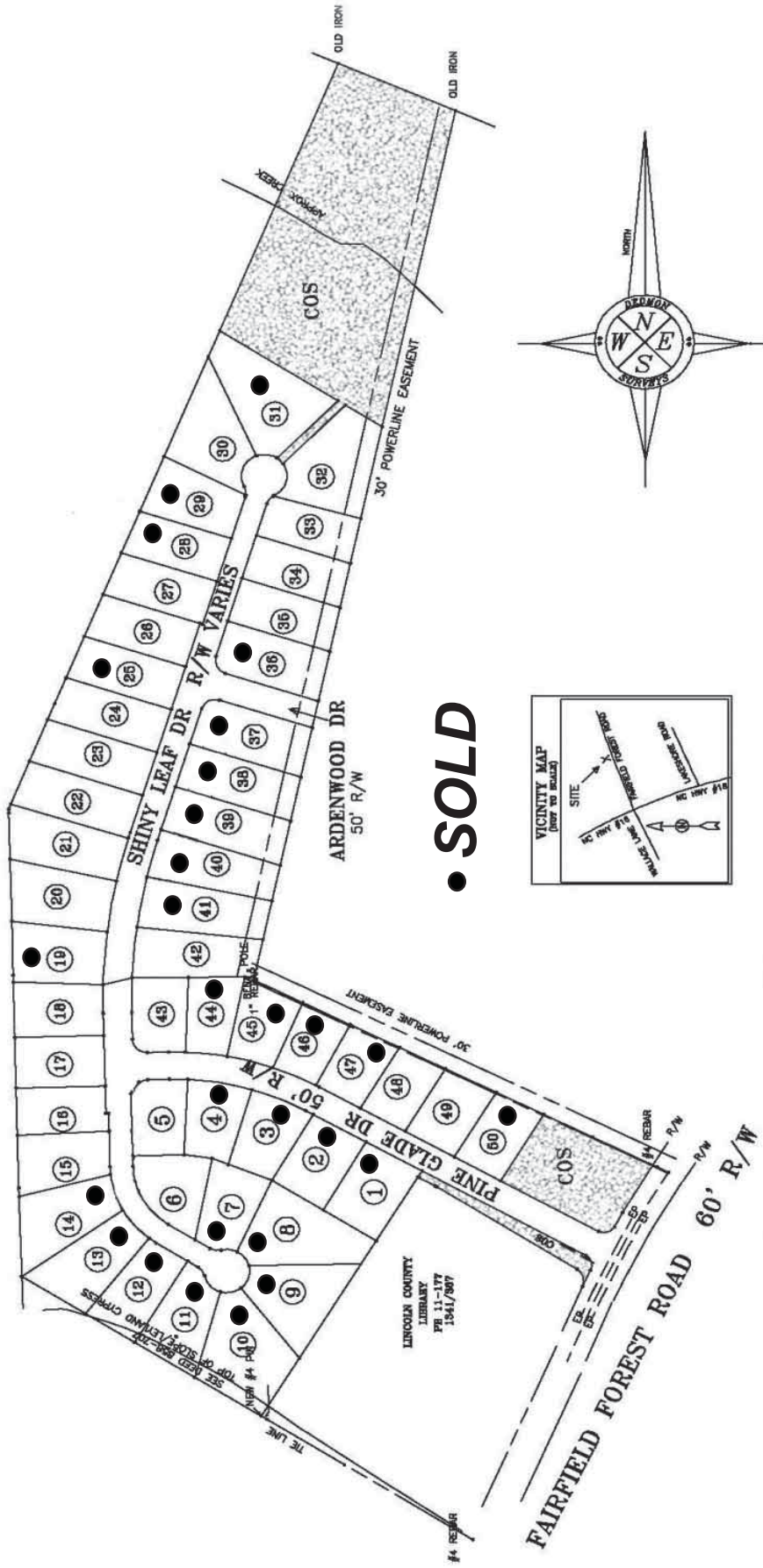
PRICE LIST

Lot #	Road	Dimensions						Acreage	Price	Water & Sewer Paid	MLS
5	119	x	115	x	89	x	139	.29	\$24,500		848438
6	219	x	169	x		x	154	.42	\$25,000		848569
11	84	x	176	x	122	x	164	.38	SOLD		SOLD
15	79	x	159	x	96	x	161	.32	\$29,500	*	848584
16	83	x	154	x	87	x	159	.30	\$25,000		848587
17	93	x	154	x	93	x	154	.33	\$25,000		848591
18	94	x	156	x	102	x	154	.35	\$29,500	*	848594
20	45	x	189	x	114	x	167	.42	\$25,000		848599
21	82	x	213	x	102	x	189	.42	\$25,000		848609
22	82	x	206	x	85	x	213	.40	\$25,000		848611
23	83	x	199	x	83	x	206	.38	\$25,000		848612
24	83	x	192	x	83	x	199	.37	\$25,000		848660
26	83	x	177	x	83	x	184	.34	\$29,500	*	848661
27	83	x	174	x	83	x	182	.34	\$25,000		848662
30	85	x	200	x	199	x	158	.45	\$29,500	*	848663
32	68	x	156	x	173	x	74x153	.53	\$26,000		848666
33	81	x	171	x	84	x	156	.31	\$29,500	*	848669
34	83	x	179	x	83	x	171	.33	\$29,500	*	848672
35	83	x	186	x	83	x	179	.34	\$25,000		2008769
42	93	x	213	x	70	x	221	.40	\$25,000		848678
43	105	x	138	x	97	x	114	.30	\$24,500		848682
48	89	x	135	x	90	x	131	.27	\$24,500		848685
49	98	x	139	x	98	x	135	.30	\$24,500		848695

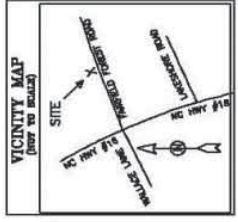
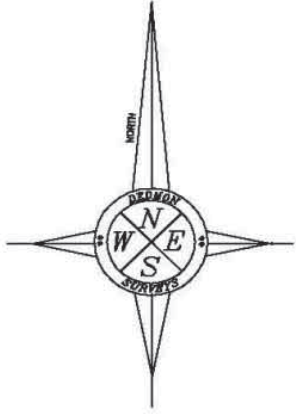
NOTE: Dimensions & Acreage are approximate - please see lot enlargements for actual figures.
Prices subject to change. 5-4-12.

County Water & Sewer Fees PAID by developer on six lots. \$6,000 in immediate savings. Noted on price list and included in asking price.

Fairfield Forest



• **SOLD**



LINCOLN COUNTY
 LIBRARY
 PB 11-177
 1941/2007

NEW PRICING

New Homes



Scan with your
Smartphone



3326 CAYTON DRIVE, WYNSWEPT

Just completed and ready for you! Two story living room, formal dining, four bedrooms and large bonus room, granite in kitchen. Main level owner suite. \$264,900. Carolina MLS 981498 or Catawba MLS 9556145



3348 CAYTON DRIVE, WYNSWEPT

Craftsman style ranch with large bonus room. Front and rear porch and just 2 miles from the four-lane Hwy. 16 bypass into Charlotte. \$249,900. Carolina MLS 970213 or Catawba MLS 9555951



3331 CAYTON DRIVE, WYNSWEPT

Brick transitional with lots of upgrades. Energy Star Qualified. 3 bedroom plus bonus, built-in cabinetry, surround sound, and just 2 miles from the four-lane Hwy. 16 bypass into Charlotte. \$295,000. Carolina MLS 935669 or Catawba MLS 9552678



4142 MINERAL LANE, MINERS CREEK

Four bedrooms plus large bonus room in this 1 1/2 story home on wood deck. North Lincoln schools. Selling as is including closing costs. \$286,000. Carolina MLS 9555944 or Catawba MLS 9560299

SOLD

Hecht Communities



Autumn Woods 3

- Iron Station in East Lincoln County
- Lot Size - 1 acre to 4.5 acres
- 50 lots on 118 acres
- Boat / Camper Storage
- Priced from \$29,900 to \$64,800



Fairfield Forest 4

- Denver in East Lincoln County
- Convenient to Golf, Swim & Tennis
- 50 Lot Community, Less than Half Remaining
- Sidewalks & Streetlights, Cty Water & Sewer
- Priced From \$24,500 to \$29,500



James Plantation 5

- Denver in East Lincoln County
- 3/4 Mile from Highway 16 Bypass
- 21 Lots , 1 to 4.5 Acres, Gated Entry
- Streetlights, County Water & Sewer
- Priced from \$19,500 to \$44,500



Kerns Meadow 2

- Huntersville in North Mecklenburg
- Lot Size - about 3/4 of an Acre
- Gated Entry 12 Lot Community
- ONLY 1 LOT REMAINING
- Priced at \$28,500



Killian Crossing 1

- Denver in East Lincoln County
- Lot Size - 1/2 Acre Plus
- Established Community, County Water
- Over 49 acres Common Open Space
- Priced from \$20,950 - \$26,250



WynSwept 6

- Maiden in S.E. Catawba County
- Lot Size - 3/4 acre to Over 2 Acres
- Two Miles from Highway 16 Bypass
- Priced from \$22,500
- New Homes Available

