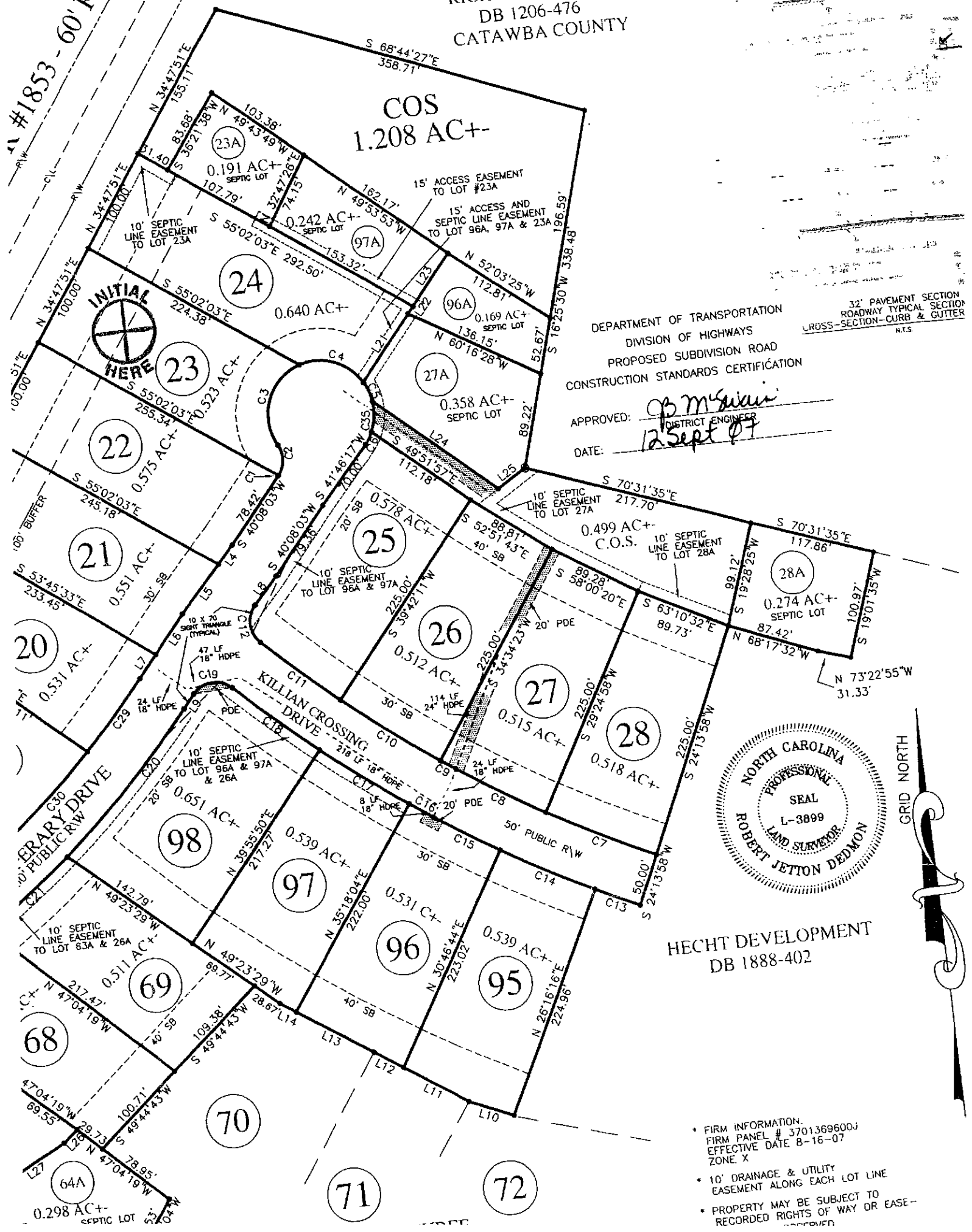


GRAPHIC SCALE - FEET

RICHARD SIGMON
DB 1206-476
CATAWBA COUNTY

#1853 - 60' R/W

COS
1.208 AC+-



32' PAVEMENT SECTION
ROADWAY TYPICAL SECTION
CROSS-SECTION-CURB & GUTTER
N.T.S.

DEPARTMENT OF TRANSPORTATION
DIVISION OF HIGHWAYS
PROPOSED SUBDIVISION ROAD
CONSTRUCTION STANDARDS CERTIFICATION

APPROVED: *R. M. Sivan*
DISTRICT ENGINEER
DATE: *12 Sept 07*



HECHT DEVELOPMENT
DB 1888-402

- FIRM INFORMATION:
FIRM PANEL # 3701369600J
EFFECTIVE DATE 8-16-07
ZONE X
- 10' DRAINAGE & UTILITY EASEMENT ALONG EACH LOT LINE
- PROPERTY MAY BE SUBJECT TO RECORDED RIGHTS OF WAY OR EASEMENTS

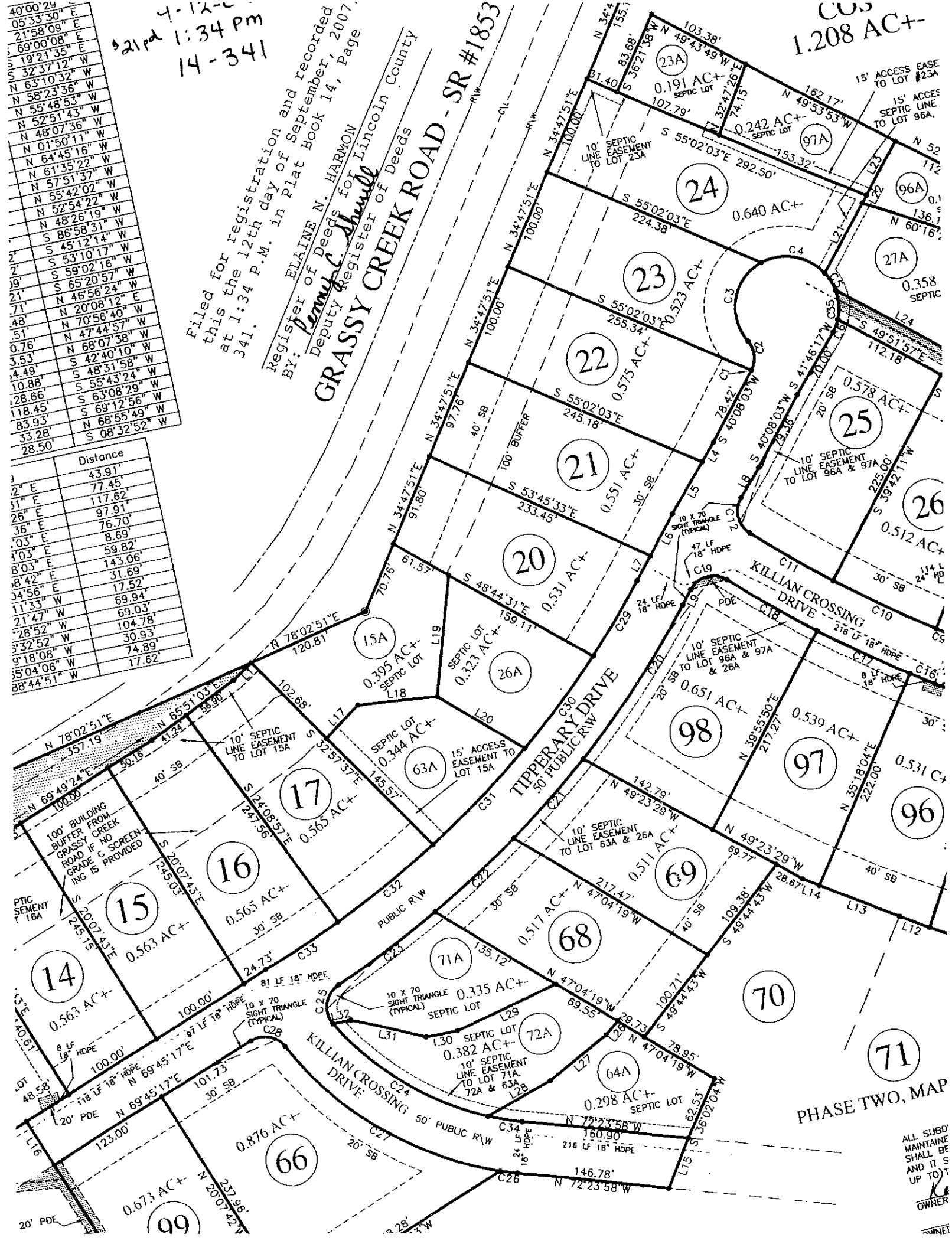
40'00.29'	E
05'33'30"	E
21'58'09"	E
69'00'08"	E
19'21'35"	E
32'37'12"	W
63'10'32"	W
58'23'36"	W
55'48'53"	W
52'51'43"	W
48'07'36"	W
01'50'11"	W
64'45'16"	W
61'35'22"	W
57'51'37"	W
55'42'02"	W
52'54'22"	W
48'26'19"	W
86'58'31"	W
45'12'14"	W
53'10'17"	W
59'02'16"	W
65'20'57"	W
46'56'24"	W
20'08'12"	E
70'56'40"	W
47'44'57"	W
68'07'38"	W
42'40'10"	W
48'31'58"	W
55'43'24"	W
63'08'29"	W
69'12'56"	W
68'55'49"	W
08'32'52"	W

4-12-20
 21pd 1:34 PM
 14-341

Filed for registration and recorded
 this the 12th day of September, 2007,
 at 1:34 P.M. in Plat Book 14, Page
 341.
 BY: *Elaine N. Harmon*
 Deputy Register of Deeds
 for Lincoln County

GRASSY CREEK ROAD - SR #1853

	Distance
2" E	43.91'
51" E	77.45'
26" E	117.62'
36" E	97.91'
03" E	76.70'
303" E	8.69'
803" E	59.82'
1842" E	143.06'
3456" E	31.69'
1133" W	17.52'
2147" W	69.94'
2852" W	104.78'
33252" W	30.93'
91808" W	74.89'
350406" W	17.62'
884451" W	



CUS
 1.208 AC+-

PHASE TWO, MAP

ALL SUBD
 MAINTAIN
 SHALL BE
 AND IT S
 UP TO T
 OWNER