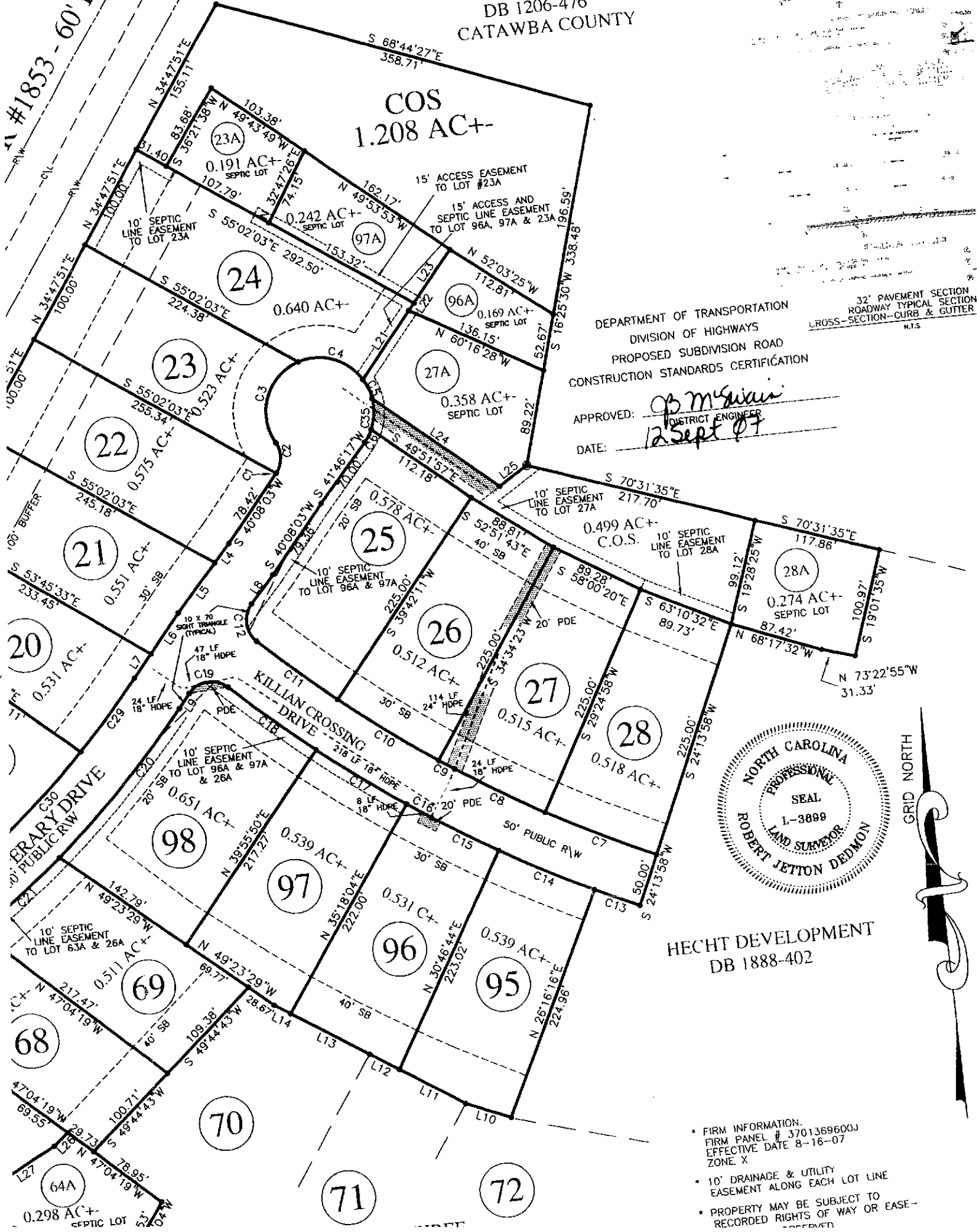


GRAPHIC SCALE - FEET

RICHARD SIGMON
DB 1206-476
CATAWBA COUNTY

#1853 - 60' R/W

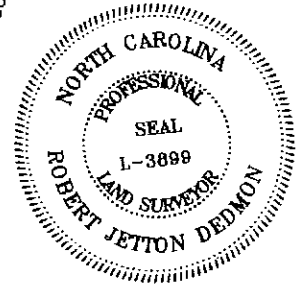
COS
1.208 AC+-



DEPARTMENT OF TRANSPORTATION
DIVISION OF HIGHWAYS
PROPOSED SUBDIVISION ROAD
CONSTRUCTION STANDARDS CERTIFICATION

32" PAVEMENT SECTION
ROADWAY TYPICAL SECTION
CROSS-SECTION-CURB & GUTTER
N.T.S.

APPROVED: *R. M. ...*
DISTRICT ENGINEER
DATE: *12 Sept 07*



HECHT DEVELOPMENT
DB 1888-402

- FIRM INFORMATION.
FIRM PANEL # 3701369600J
EFFECTIVE DATE 8-16-07
ZONE X
- 10' DRAINAGE & UTILITY
EASEMENT ALONG EACH LOT LINE
- PROPERTY MAY BE SUBJECT TO
RECORDED RIGHTS OF WAY OR EASE-

