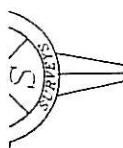


COUNTY, CER
MAP OR PLAT TO WHICH THIS
AFFIXED MEETS ALL STATUT
FOR RECORDING.

DATE
10' X 70' SIGHT TRIANGLE



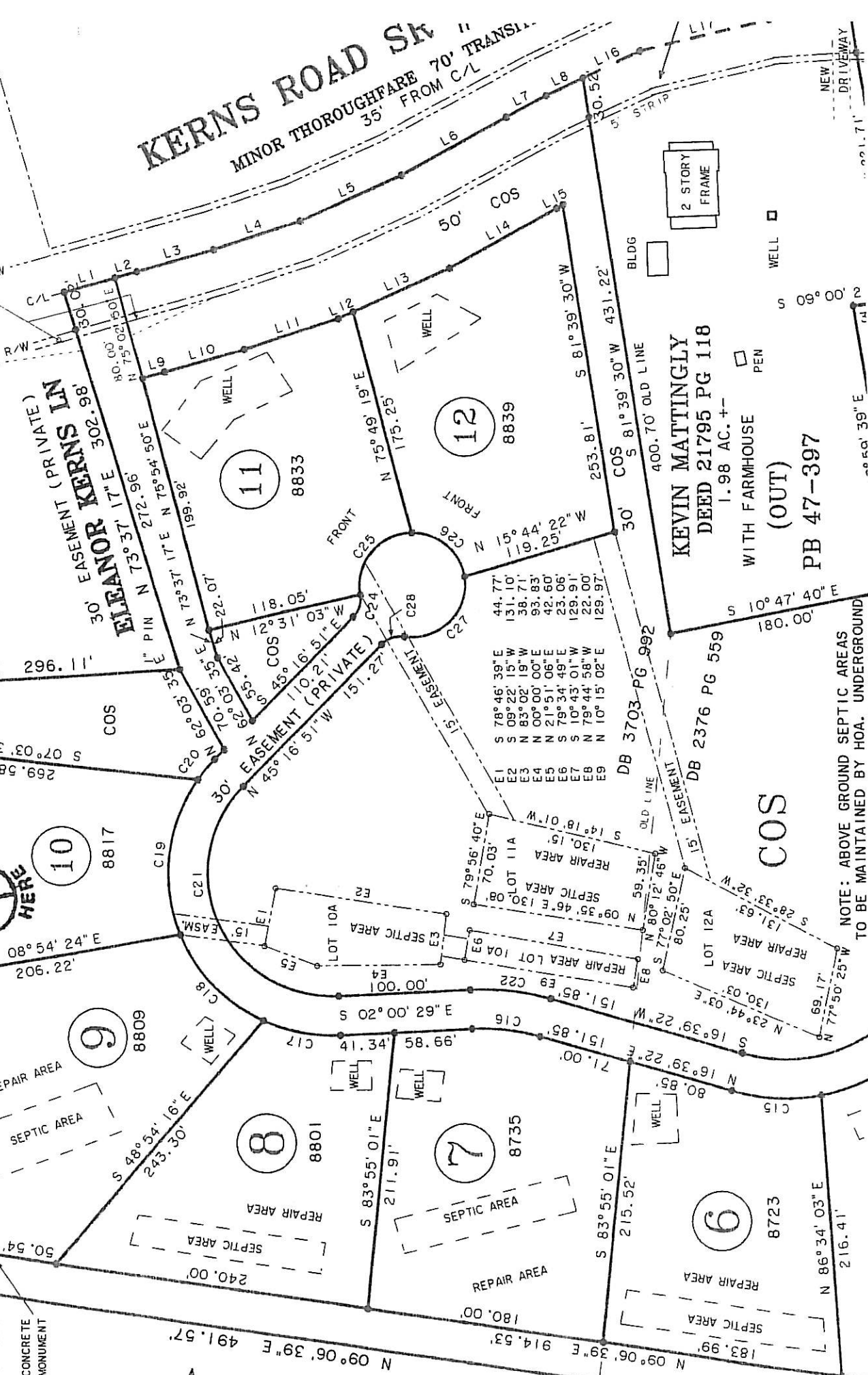
WAYNE MAKILIN
DB 5695 PG 464
H4 PIN N 74°59'43"E 269.96'
N 75°01'50"E 30'
COS 407.90'
N 74°59'43"E 407.90'
E 42°54'24" S 22.902'
E 42°54'24" S 22.902'
S 07°03'30"W 269.58'
CONCRETE MONUMENT
WELL

JUDITH L. MITCHELL
DB 17869 PG 974
ID H01523103 ZONED R
ELEANOR KERNS LN
30' EASEMENT (PRIVATE)
80.00' N 75°02'50"E
N 75°02'50"E 302.98'
E 1" PIN N 73°37'17"E 272.96'
N 75°54'50"E
E 1" PIN N 73°37'17"E N 75°54'50"E
199.92'

KERNS ROAD SK " II
MINOR THOROUGHFARE 70' TRANS
35' FROM C/L

H4 AC. +-
10.48 AC. +-
TOTAL

CONCRETE MONUMENT
H6 REBAR IN ROCKPILE
CONCRETE MONUMENT



KEVIN MATTINGLY
DEED 21795 PG 118
1.98 AC. +-
WITH FARMHOUSE
(OUT)
PB 47-397

NOTE: ABOVE GROUND SEPTIC AREAS
TO BE MAINTAINED BY HOA. UNDERGROUND

(704) 483-4908

DEED 14357/181 & 2376/559 & PLAT BOOK 47-397
MAP REVISED 1-19-06 (IMPERV. AREA & HS BOX)

MAP REVISED 3-7-06 PER HUNTERSVILLE
MAP REVISED 4-25-07 (REMOVE HS BOX
& SHOW WELL & SEPTIC AREAS)

PG 238
ZONED R
ID #01523101 & ID #01523102
PROPERTY IS ZONED R

MAP REVISED 5-5-07 (FINAL REVISIONS PER T.O.H.)

CURVE	RADIUS	LENGTH	CHORD	CH. BEARING
C1	200.00'	55.57'	55.39'	N 75° 17' 02" W
C2	200.00'	19.69'	19.68'	N 64° 30' 15" W
C3	120.00'	108.17'	102.74'	N 87° 01' 49" W
C4	168.75'	25.53'	25.50'	S 71° 57' 27" W
C5	168.75'	91.02'	89.92'	N 88° 15' 25" W
C6	390.00'	90.83'	90.62'	N 79° 28' 38" W
C7	390.00'	59.31'	58.25'	S 89° 29' 39" W
C8	420.00'	161.69'	160.69'	S 83° 50' 02" E
C9	138.75'	95.83'	93.93'	N 87° 24' 32" E
C10	150.00'	132.71'	128.43'	S 87° 01' 49" E
C11	170.00'	60.55'	60.23'	S 71° 53' 15" E
C12	151.13'	73.75'	73.02'	N 80° 52' 56" W
C13	151.13'	41.25'	41.12'	N 59° 04' 58" W
C14	151.13'	110.00'	107.59'	N 30° 24' 43" W
C15	151.13'	69.15'	68.55'	N 03° 32' 52" E
C16	160.00'	52.12'	51.89'	N 07° 19' 26" E
C17	125.00'	60.00'	59.43'	N 11° 44' 34" E
C18	125.00'	93.85'	91.66'	N 47° 00' 12" E
C19	125.00'	124.44'	119.36'	S 82° 58' 03" E
C20	125.00'	20.00'	19.98'	S 45° 51' 53" E
C21	95.00'	226.70'	176.61'	S 66° 21' 20" W
C22	190.00'	61.88'	61.62'	S 07° 19' 26" W
C23	121.13'	235.76'	200.27'	S 39° 06' 11" E
C24	20.00'	18.96'	18.26'	S 72° 26' 18" E
C25	40.00'	69.62'	61.16'	S 49° 43' 58" E
C26	40.00'	56.80'	52.14'	S 40° 48' 30" W
C27	40.00'	75.08'	64.53'	N 44° 44' 23" W
C28	20.00'	18.96'	18.26'	N 18° 07' 25" W

H4 P1

PROPERTY MAY BE SUBJECT TO RECORDED OR
UNRECORDED RIGHTS OF WAYS OR EASEMENTS
NOT OBSERVED

ID H01523105 ZONED R
MECKLENBURG COUNTY
DB 11851 PG 657

47% TOTAL IN LOTS #1 - H6
4.91 AC. +

COURSE	BEARING	DISTANCE
L1	S 14° 43' 18" E	40.00'
L2	S 14° 43' 18" E	17.66'
L3	S 15° 00' 42" E	60.51'
L4	S 17° 26' 36" E	68.95'
L5	S 23° 45' 38" E	85.04'
L6	S 28° 31' 39" E	90.62'
L7	S 27° 37' 55" E	34.44'
L8	S 24° 53' 29" E	31.22'
L9	S 14° 43' 18" E	17.54'
L10	S 15° 00' 42" E	62.41'
L11	S 17° 26' 36" E	75.06'
L12	S 23° 45' 38" E	12.73'
L13	S 23° 45' 38" E	80.06'
L14	S 28° 31' 39" E	93.32'
L15	S 27° 37' 55" E	5.74'
L16	S 24° 53' 29" E	48.25'
L17	S 13° 45' 08" E	102.13'
L18	S 03° 53' 28" E	61.97'
L19	S 03° 53' 28" E	13.11'
L20	S 00° 43' 08" E	67.57'
L21	S 00° 43' 08" E	30.30'
L22	S 00° 43' 08" E	4.10'
L23	S 01° 21' 09" W	18.42'
L24	S 01° 21' 09" W	83.67'
L25	S 01° 59' 08" W	48.68'

ADDITIONAL 5' TO BE DEDICATED
TO NCDOT AT TIME OF RECORDING
FOR THOROUGHFARE R/W LIMIT

ID H01702107 ZONED R
CHARLES STRICKLAND
DB 7741 PG 288

27" E

SIGHT TRIANGLE

27" W

NOTE: NONE OF THESE PARCELS ARE LOCATED
IN ANY FLOODPLAINS OR FLOOD HAZARD AREAS
SHOWN ON FEMA FIRM MAP COMMUNITY PANEL
370478-086E DATED 2-04-04

APPROVED IN ACCORDANCE WITH THE ENGINEERING REQUIREMENTS
OF THE SUBDIVISION ORDINANCE OF THE TOWN OF HUNTERSVILLE
MECKLENBURG COUNTY, NORTH CAROLINA.

MECKLENBURG COUNTY LAND USE AND ENVIRONMENTAL SERVICES AGENCY

COUNTY STAFF MECKLENBURG COUNTY DATE