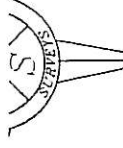


COUNTY, CER
 MAP OR PLAT TO WHICH THIS
 AFFIXED MEETS ALL STATUT
 FOR RECORDING.

DATE



ID H01523103 ZONED R
JUDITH L. MITCHELL
 DB 17869 PG 974

ELEANOR KERNS IN
 30' EASEMENT (PRIVATE)

CONCRETE MONUMENT

CONCRETE MONUMENT

WAYNE MAKIN
 DB 5695 PG 464

84 AC. +-
 10.48 AC. +-
 -- TOTAL

#6 REBAR IN ROCKPILE
 CONCRETE MONUMENT

KERNS ROAD SK
 MINOR THOROUGHFARE 70' TRANSF.
 35' FROM C/L

10' X 70' SIGHT TRIANGLE

CONCRETE MONUMENT

CONCRETE MONUMENT

CONCRETE MONUMENT

CONCRETE MONUMENT

CONCRETE MONUMENT

CONCRETE MONUMENT

CONCRETE MONUMENT

CONCRETE MONUMENT

CONCRETE MONUMENT

CONCRETE MONUMENT

CONCRETE MONUMENT

CONCRETE MONUMENT

CONCRETE MONUMENT

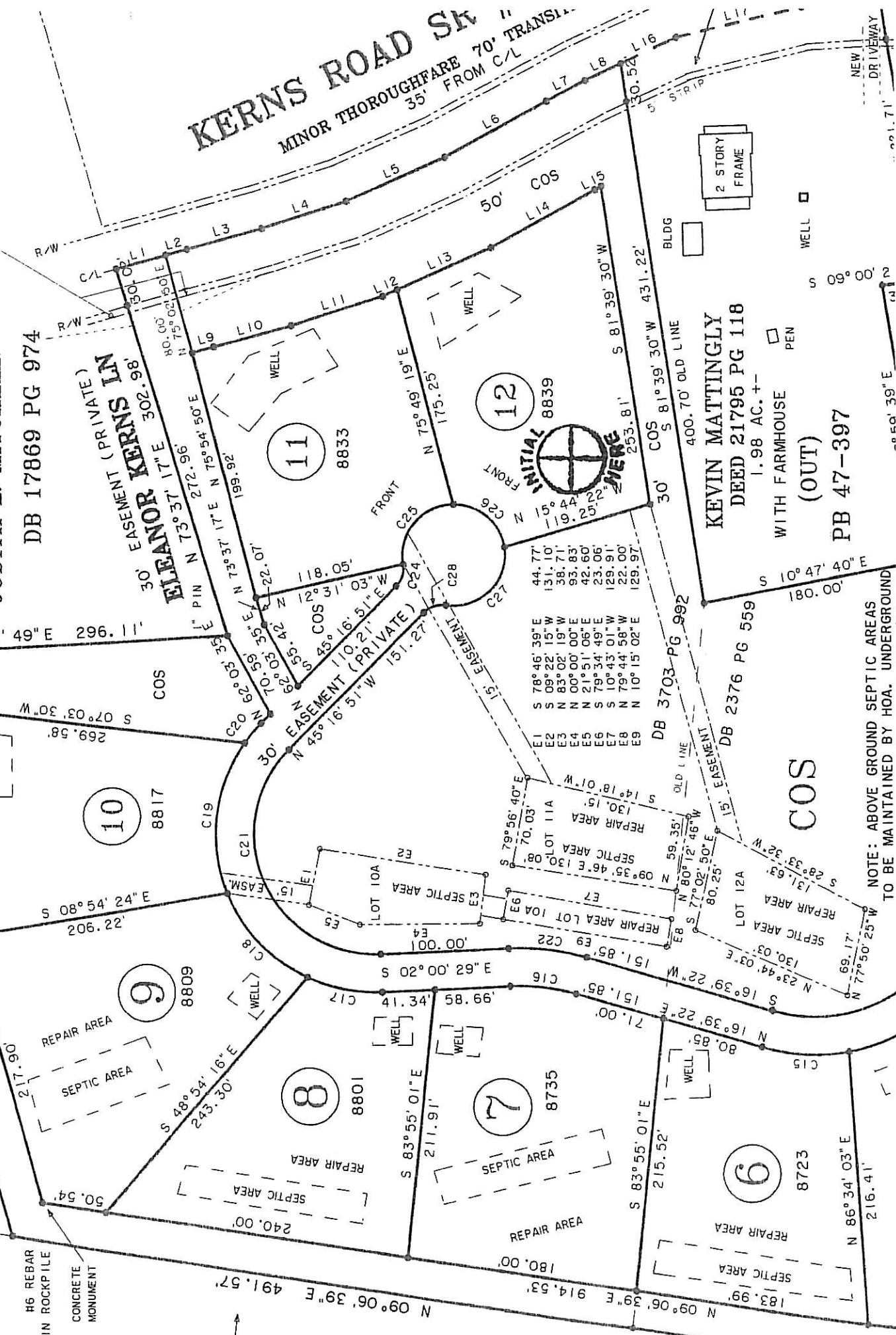
CONCRETE MONUMENT

CONCRETE MONUMENT

CONCRETE MONUMENT

CONCRETE MONUMENT

CONCRETE MONUMENT



KEVIN MATTINGLY
 DEED 21795 PG 118
 1.98 AC. +-
 WITH FARMHOUSE
 (OUT)
 PB 47-397

2 STORY FRAME
 WELL
 PEN

COS

NOTE: ABOVE GROUND SEPTIC AREAS
 TO BE MAINTAINED BY HOA. UNDERGROUND

(704) 483-4908

DEED 14357/181 & 2376/559 & PLAT BOOK 47-397
MAP REVISED 1-19-06 (IMPERV. AREA & HS BOX)

WHITE
MAP REVISED 3-7-06 PER HUNTERSVILLE
PG 238
MAP REVISED 4-25-07 (REMOVE HS BOX
& SHOW WELL & SEPTIC AREAS)

ID #01523101 & ID #01523102

PROPERTY IS ZONED R

MAP REVISED 5-5-07 (FINAL REVISIONS PER T.O.H.)

CURVE	RADIUS	LENGTH	CHORD	CH. BEARING
C1	200.00'	55.57'	55.39'	N 75° 17' 02" W
C2	200.00'	19.69'	19.68'	N 64° 30' 15" W
C3	120.00'	106.17'	102.74'	N 87° 01' 49" W
C4	168.75'	25.53'	25.50'	S 71° 57' 27" W
C5	168.75'	91.02'	89.92'	N 88° 15' 25" W
C6	390.00'	90.83'	90.62'	N 79° 28' 38" W
C7	390.00'	59.31'	59.25'	S 89° 29' 39" W
C8	420.00'	161.69'	160.69'	S 83° 50' 02" E
C9	138.75'	95.83'	93.93'	N 87° 24' 32" E
C10	150.00'	132.71'	128.43'	S 87° 01' 49" E
C11	170.00'	60.55'	60.23'	S 71° 53' 15" E
C12	151.13'	73.75'	73.02'	N 80° 52' 56" W
C13	151.13'	41.25'	41.12'	N 59° 04' 58" W
C14	151.13'	110.00'	107.59'	N 30° 24' 43" W
C15	151.13'	69.15'	68.55'	N 07° 19' 26" E
C16	160.00'	52.12'	51.89'	N 11° 44' 34" E
C17	125.00'	60.00'	59.43'	N 47° 00' 12" E
C18	125.00'	93.85'	91.66'	S 82° 58' 03" E
C19	125.00'	124.44'	119.36'	S 49° 51' 53" E
C20	125.00'	20.00'	19.98'	S 66° 21' 20" W
C21	95.00'	226.70'	176.61'	S 07° 19' 26" W
C22	190.00'	61.89'	61.62'	S 39° 06' 11" E
C23	121.13'	235.76'	200.27'	S 72° 26' 18" E
C24	20.00'	18.96'	18.26'	S 49° 43' 58" E
C25	40.00'	69.62'	61.16'	S 40° 48' 30" W
C26	40.00'	56.80'	52.14'	N 44° 44' 23" W
C27	40.00'	75.08'	64.53'	N 18° 07' 25" W
C28	20.00'	18.96'	18.26'	N 18° 07' 25" W

PROPERTY MAY BE SUBJECT TO RECORDED OR
UNRECORDED RIGHTS OF WAYS OR EASEMENTS
NOT OBSERVED

ID #01523105 ZONED R
MECKLENBURG COUNTY
DB 11851 PG 657

47% TOTAL IN LOTS H1 - H6
4.91 AC. +- →

COURSE	BEARING	DISTANCE
L1	S 14° 43' 18" E	40.00'
L2	S 14° 43' 18" E	17.66'
L3	S 15° 00' 42" E	60.51'
L4	S 17° 26' 36" E	88.95'
L5	S 23° 45' 38" E	85.04'
L6	S 28° 31' 39" E	90.62'
L7	S 27° 37' 55" E	34.44'
L8	S 24° 53' 29" E	31.22'
L9	S 14° 43' 18" E	17.54'
L10	S 15° 00' 42" E	62.41'
L11	S 17° 26' 36" E	75.06'
L12	S 23° 45' 38" E	12.73'
L13	S 23° 45' 38" E	80.06'
L14	S 28° 31' 39" E	93.32'
L15	S 27° 37' 55" E	5.74'
L16	S 24° 53' 29" E	48.25'
L17	S 13° 45' 08" E	102.13'
L18	S 03° 53' 28" E	61.97'
L19	S 03° 53' 28" E	13.11'
L20	S 00° 43' 08" E	67.57'
L21	S 00° 43' 08" E	30.30'
L22	S 00° 43' 08" E	4.10'
L23	S 01° 21' 09" W	18.42'
L24	S 01° 21' 09" W	83.67'
L25	S 01° 59' 08" W	48.68'

H4 PI
ADDITIONAL 5' TO BE DEDICATED
TO NCDOT AT TIME OF RECORDING
FOR THOROUGHFARE R/W LIMIT

ID #01702107 ZONED R
CHARLES STRICKLAND
DB 7741 PG 288

27" E

SIGHT TRIANGLE

27" W

NOTE: NONE OF THESE PARCELS ARE LOCATED
IN ANY FLOODPLAINS OR FLOOD HAZARD AREAS
SHOWN ON FEMA FIRM MAP COMMUNITY PANEL
370478-086E DATED 2-04-04

APPROVED IN ACCORDANCE WITH THE ENGINEERING REQUIREMENTS
OF THE SUBDIVISION ORDINANCE OF THE TOWN OF HUNTERSVILLE
MECKLENBURG COUNTY, NORTH CAROLINA.

MECKLENBURG COUNTY LAND USE AND ENVIRONMENTAL SERVICES AGENCY

COUNTY STAFF MECKLENBURG COUNTY

DATE